

Figure 2: Rel. err. measures for BICAV (10 blocks) with various relaxation parameters (Case 2).

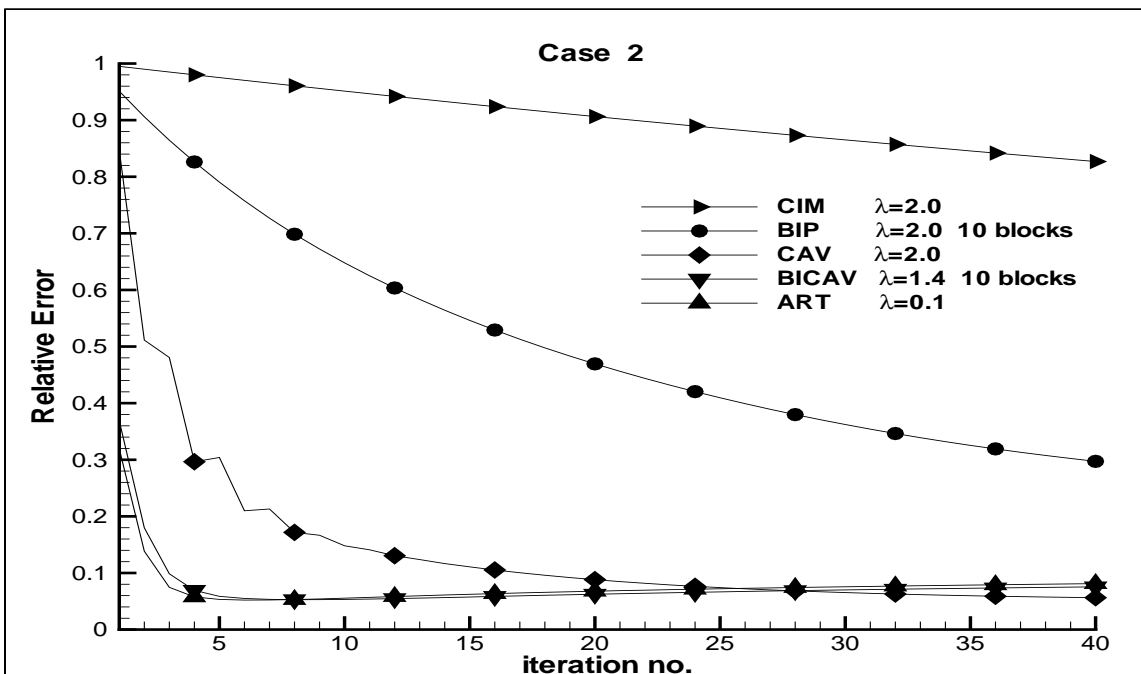


Figure 3: Rel. Err. comparisons of CIM, BIP, CAV, BICAV and ART (Case 2).

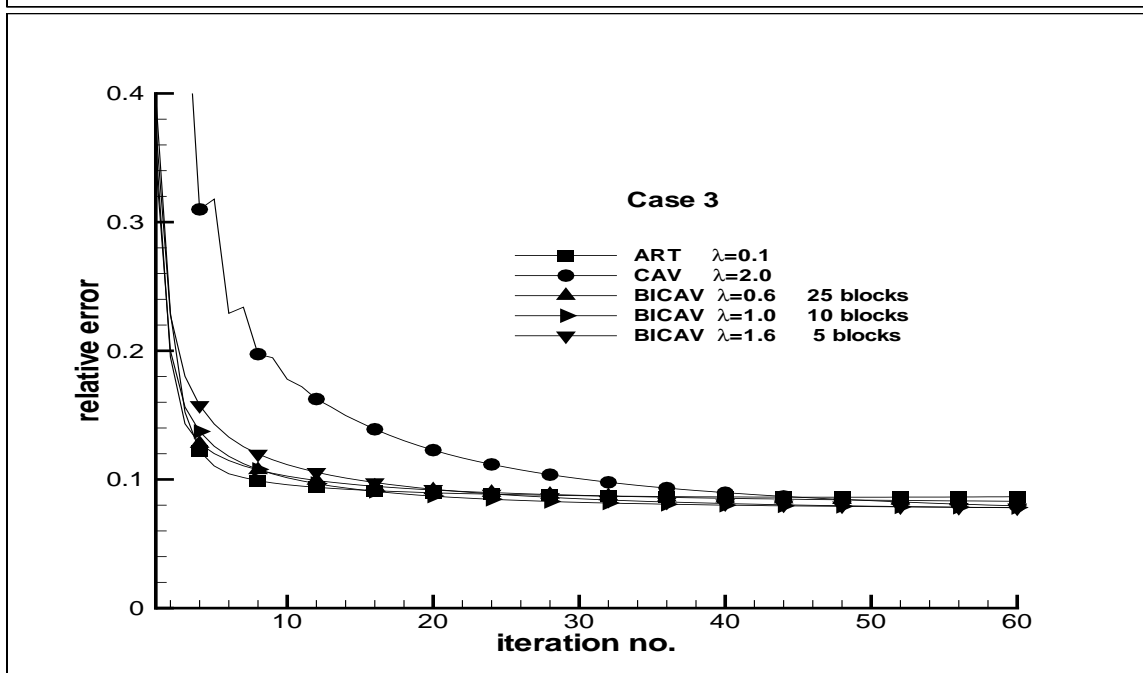
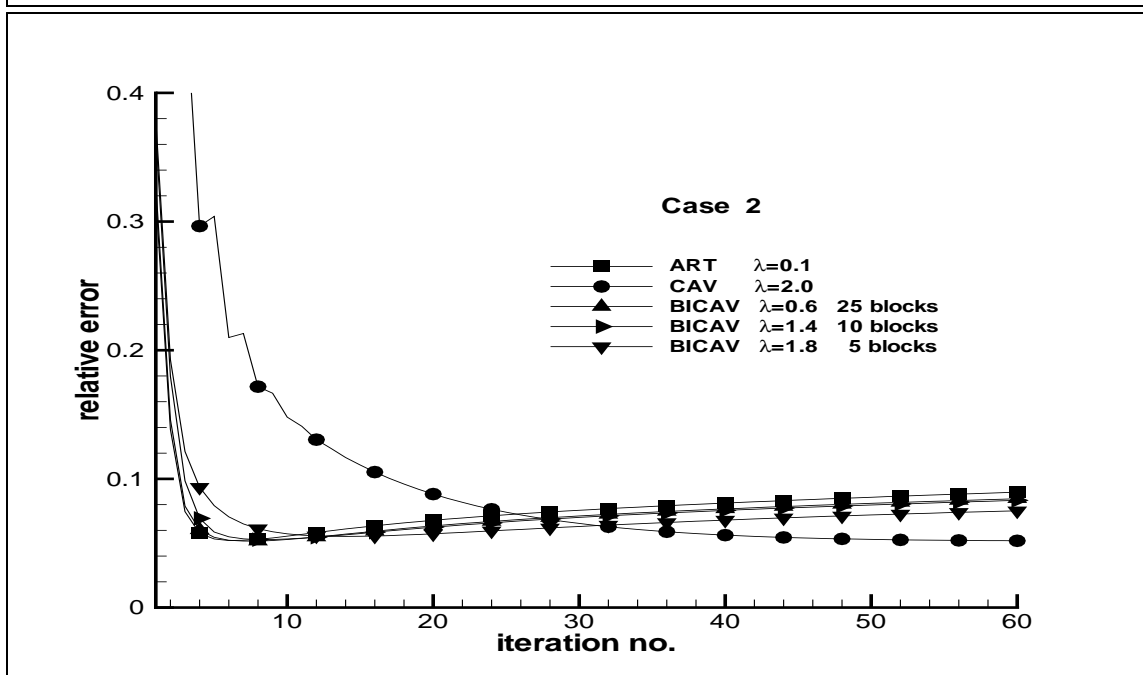
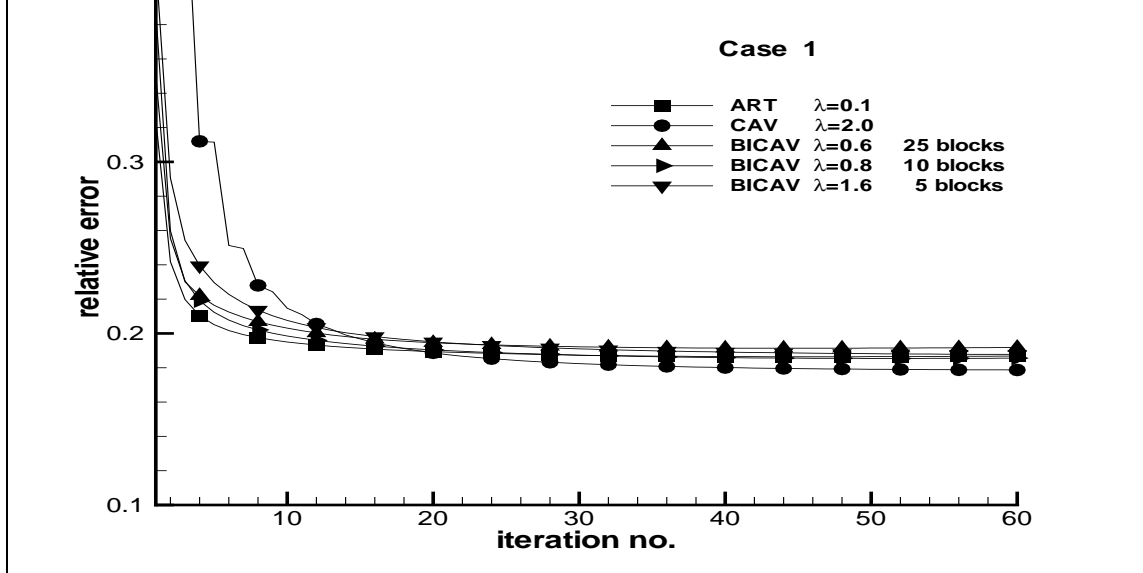


Figure 4: Relative error for Cases 1-3.

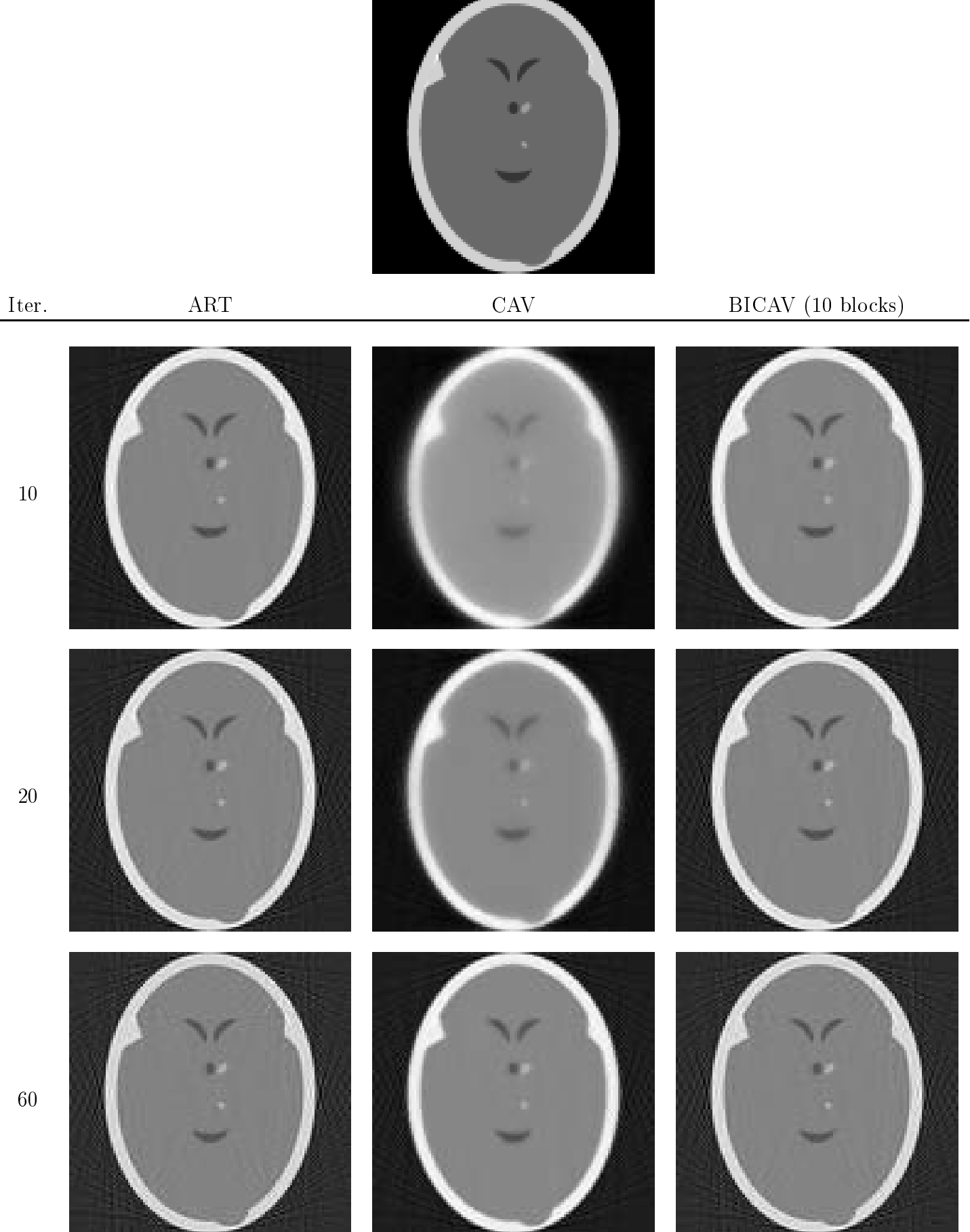


Figure 5: Phantom and reconstructed images for Case 2 (resolution  $115 \times 115$ ).

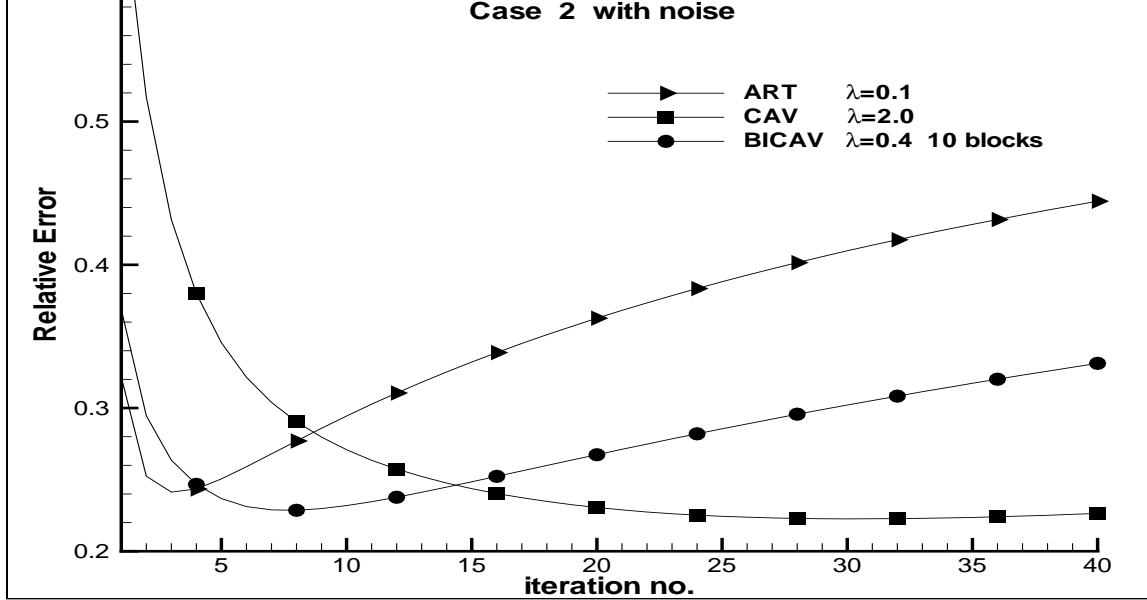


Figure 6: Noisy image: rel. err. measures for CAV, BICAV and ART (Case 2).

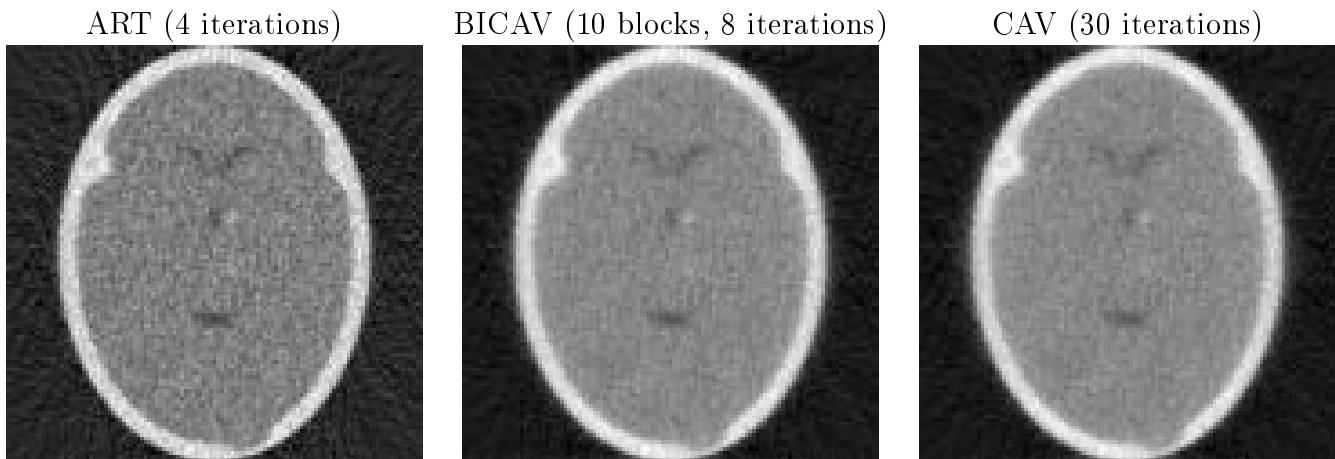


Figure 7: Best images for Case 2 with noise.

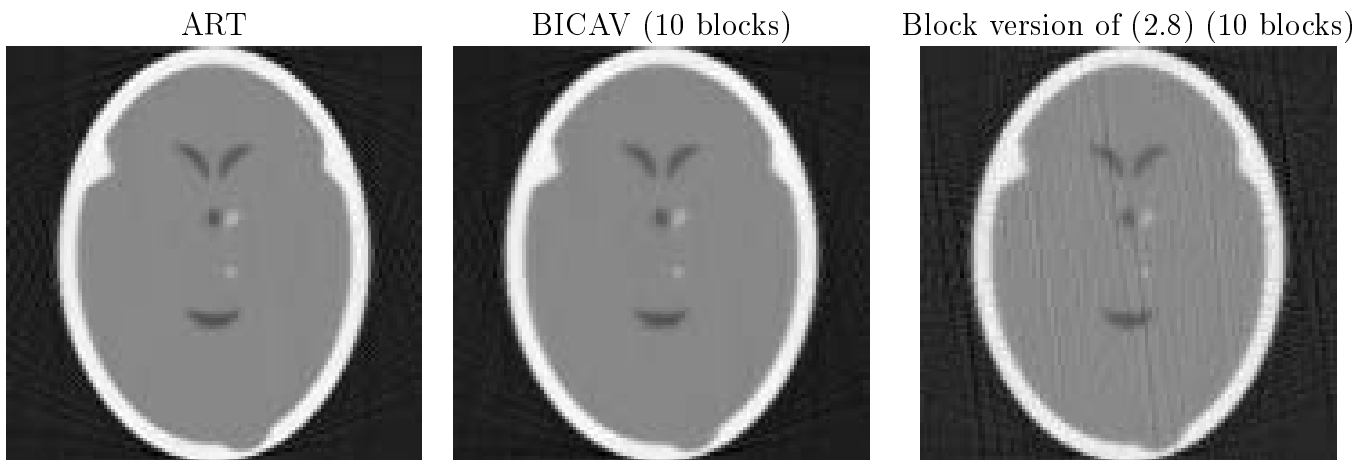


Figure 8: Case 2 after 5 iterations for ART, BICAV and the block version of Eq. (2.8).